

Steveston-London Secondary School

GRADE 9 PROGRAM PLANNING

2025 - 2026

Land Acknowledgement



We acknowledge that we are on the traditional, ancestral, and unceded territory of the people of the hən̓q̓əmin̓əm̓ language group, and we thank those who have occupied and cared for this land for thousands of years.

Counselling Department

Ms. Ratcliffe	A, Y, Z and International Students
Ms. Lau	B – Hu
Ms. Zee	Hua – O
Ms. Sihota	P – X
Ms. Digeso	Career Information Advisor

Grade 9

Core Courses:

- English Language Arts
- Math 9 or Math 9 Enriched
- Science 9
- Social Studies 9
- Physical and Health Education 9

Three Electives:

- One Fine Art
- One Applied Skill
- One Choice

English Language



English Language
Arts 9



English
Language Arts 9
Spectrum

Mathematics



Mathematics 9



Mathematics 9
Spectrum



Mathematics 9
Enriched

Science

A dark blue spiral notebook cover with a white spiral binding on the left side. The text "Science 9" is printed in white in the center.

Science 9

A teal spiral notebook cover with a white spiral binding on the left side. The text "Science 9 Spectrum" is printed in white in the center.

Science 9
Spectrum

Social Studies

A dark blue spiral notebook cover with a white spiral binding on the left side. The text "Social Studies 9" is printed in white in the center.

Social Studies 9

A teal spiral notebook cover with a white spiral binding on the left side. The text "Social Studies 9 Spectrum" is printed in white in the center.

Social Studies 9
Spectrum

Physical and Health Education



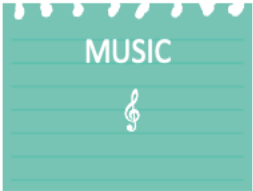
Physical and Health
Education 9

THREE ELECTIVES

One Fine Art
One Applied Skill
One Choice

(often an additional language)

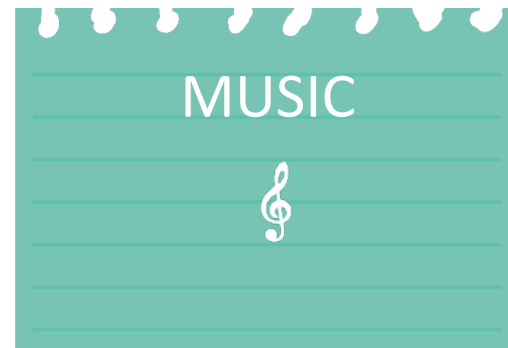
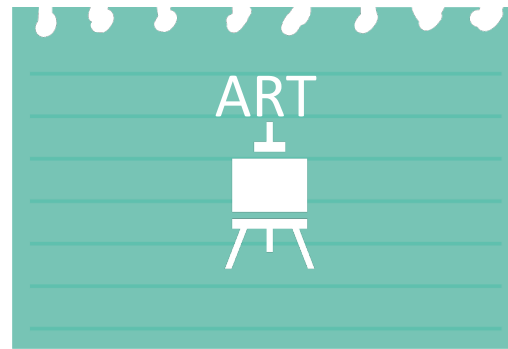
FINE ARTS COURSES

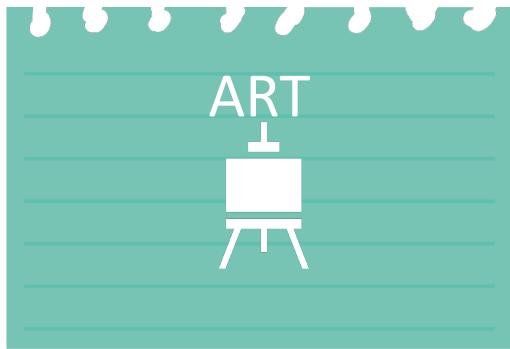


APPLIED SKILL COURSES



FINE ARTS COURSES






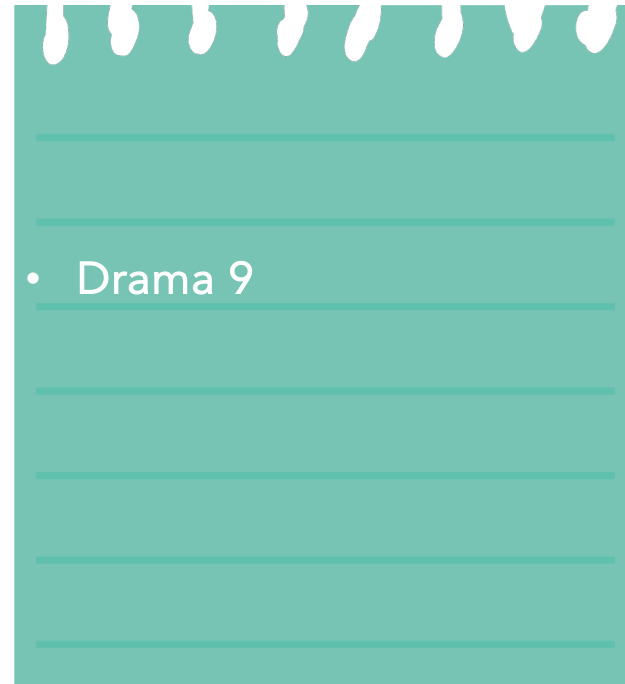
- Art 9: Art Studio
- Art 9: Visual Arts – Ceramics and Sculpture
- Art 9: Visual Arts – Drawing and Painting
- Photography Level 1



MUSIC



- 
- Music 9: Concert Band
 - Music 9: Vocal Ensemble
 - Music 10: Guitar Level 1



APPLIED SKILL COURSES

BUSINESS EDUCATION



HOME
ECONOMICS



TECHNOLOGY
EDUCATION





BUSINESS EDUCATION

- Business Education 10:
Marketing Entrepreneurship
- Business Education 10:
Computer Studies



- Home Economics 10:
Food Studies Level 1
- Home Economics 10:
Textiles Level 1



TECHNOLOGY EDUCATION



- Tech Ed 10: Drafting and Design Level 1
- Tech Ed 10: Woodwork Level 1
- Tech Ed 10: Metal Design Level 1
- Tech Ed 10: Transportation Technology Level 1

MODERN LANGUAGES



FRENCH 9



JAPANESE 9



MANDARIN 9



SPANISH 9

Additional Language

An additional language is NOT required for
graduation

Additional languages are always an asset in life

Additional Language

Ways to get an additional language:

Language 9, 10, 11, 12

Language Introductory 11 plus Language 11

Language Challenge Exam

ELL PROGRAM

As you plan for next year, select the next level on your form:

- Assume that you will be moving up one level
(unless your teacher has told you otherwise)
- The ELL department will update counsellors if there are any changes to anticipated ELL levels

Please see your ELL teacher if you have any questions

ELL PROGRAM

Beginning – Level 1

- ELL Science
- ELL Social Studies
- ELL English
- Math 9
- PHE 9
- Elective
- Elective
- Elective

ELL PROGRAM

Developing – Level 2

- ELL Science
- ELL Social Studies
- ELL English
- Math 9
- PHE 9
- Science 9
- Elective
- Elective

ELL PROGRAM

Expanding – Level 3

- ELL Social Studies
- ELL English
- Math 9
- PHE 9
- Science 9
- Social Studies 9
- Elective
- Elective

ELL PROGRAM

Consolidating – Level 4

- **ELL English**
- English 9
- Math 9
- PHE 9
- Science 9
- Social Studies 9
- Elective
- Elective

Select your courses according to your own interests and passions



Things to Consider

The school builds the timetable based on student requests and our goal is that you get the courses you ask for – what you tell us you want to take is very important

Some course changes may be possible in September and in January at semester change— however it is best to plan your course load, to avoid disappointment if a change is impossible

If you chose a course that only offered in one block, it will mean that you may have to chose between that class and other classes also offered at that time

A balanced timetable is important to your wellbeing and development – it is important to stretch yourself AND to take courses that you enjoy

Select your courses according to your own
interests and passions

Select your courses according
to your own
interests and passions

Select your courses according to your own
interests and passions

The school builds the timetable based on student requests and our goal is that you get the courses you ask for – what you tell us you want to take is very important

Select your courses according to your own
interests and passions

If you chose a course that is only
offered in one block, it
will mean that you may have to
choose between that
class and other classes also
offered at that time

Select your courses according to your own
interests and passions

It is important to communicate
with your counsellor
in a timely way if you make or
change
summer school or online course
plans

Select your courses according to your own
interests and passions

Some course changes may be possible in September and in January at semester change— however it is best to plan your course load in order to avoid disappointment if a change is impossible

Select your courses according to your own
interests and passions

A balanced timetable is
important to your wellbeing
and development – It is
important to stretch yourself
AND to take courses that you
enjoy

Times to confirm your selections:

When you enter your courses into the system in February

When course confirmations come out in March/April

When you receive your tentative timetable in June

Important Dates



- MyEd access available – January 17
- Parent Information – January 16
- PLT session to Support Data Entry – February 5 and 6
- Additional Language Placement – Feb 13 PLT1
- Deadline to enter courses - February 18



**Online Portal
Access
Jan 17 – Feb 18**

MyEducation BC Prod 17

Login ID

Password

[I forgot my password](#)



MyEd

09

Grade 8's Going Into Grade 9 Course Selection Process:

All students must be enrolled in 8 courses. Please find the appropriate column in the table below and then click your course selections accordingly.

Students will be able to select courses on MyEdBC from January 17 to February 18, 2025. Please reach out to your counsellor if you have any questions or concerns.

If you plan to take summer school courses or online courses or you have taken courses beyond your grade level, please inform your counsellor in the "notes to counsellor" section. Thank you!

Regular	Spectrum	ELL 1	ELL 2	ELL 3	ELL 4
English 9	English 9 Spectrum*	ELL 1 English JR	ELL 2 English JR	ELL 3 English JR	ELL 4 Transitional English JR
Social Studies 9	Social Studies 9 Spectrum*	ELL 1 Social Studies JR	ELL 2 Social Studies JR	ELL 3 Social Studies JR	Social Studies 9
Science 9	Science 9 Spectrum*	ELL 1 Science JR	ELL 2 Science JR	Science 9	Science 9
Physical and Health Education 9	Physical and Health Education 9	Physical and Health Education 9	Physical and Health Education 9	Physical and Health Education 9	Physical and Health Education 9
Math 9 OR Math 9 Enriched*	Math 9 Spectrum*	Math 9	Math 9	Math 9	Math 9
Elective #1 (Fine Arts)	Elective #1 (Fine Arts)	Elective #1 (Fine Arts)	Elective #1 (Fine Arts)	Elective #1 (Fine Arts)	Elective #1 (Fine Arts)
Elective #2 (ADST)	Elective #2 (ADST)	Elective #2 (ADST)	Elective #2 (ADST)	Elective #2 (ADST)	Elective #2 (ADST)
Elective #3*	Elective #3*	Elective #3*	Elective #3*	Elective #3*	Elective #3*

*Spectrum (you must be currently in the Spectrum Program to select this option)

*Math 9 Enriched (select this option if you were enrolled in Math 8 Enriched this year or if a teacher has recommended this course to you)

*Elective #3 may be a second language, other elective or possibly a resource block (if you have an IEP and a resource block this year)

What we need from you!

- Thoughtfully select your courses
- Come to the PLT session Feb 5 and 6 to learn how to enter your selections

All courses must be entered by:

February 18

Course Planning Guide

RICHMOND
SCHOOL DISTRICT NO. 38

The Richmond School District is the best place to learn and lead



[Home](#) [News](#) [Alumni News](#) [Extracurricular](#) [Library](#) [Our School Story](#) [Parents](#) [School Calendar](#) [School Information](#) [Students](#) [Subscribe to the SLSS Website](#)

Early Warning Line: Reporting Student Absences or Early Dismissals

Please email steveston-london@sd38.bc.ca OR leave a message on the Early Warning Line at 604-668-6670.

Please state your child's first and last

Latest News

Opt-In to District/School Text Message Communication

The Richmond School District is implementing a new communication tool that will enable both the district and our school to send you text messages. This...

[Read more](#)



Search

MyEdBC Family Portal





Early Warning Line: Reporting Student Absences or Early Dismissals

Please email steveston-london@sd38.bc.ca OR leave a message on the Early Warning Line at 604-668-6670.

Please state your child's first and last name, student # and the reason they are excused.

Social Media



Latest News

Opt-In to District/School Text Message Communication

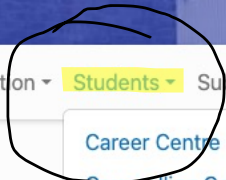
The Richmond School District is implementing a new communication tool that will enable both the district and our school to send you text messages. This...

[Read more](#)



Daily Announcement - Wednesday January 10, 2024

[Read more](#)



- [Career Centre](#)
- [Counselling Centre](#)
- [General Information for Students](#)
- [Grad News](#)
- [Grad Write Ups and Baby Photos](#)
- [Grade 8 Camp](#)
- [Online Resources](#)
- [Program Planning](#)
- [Provincial Graduation Assessments](#)
- [SLSS Grade 12 Post-Secondary Information Evening Rec](#)
- [Scholarship Information](#)
- [Spectrum Program](#)
- [Student Council](#)
- [Student Transcript Service](#)

**Steveston-London
Secondary School
Program Planning Guide
2025-2026**

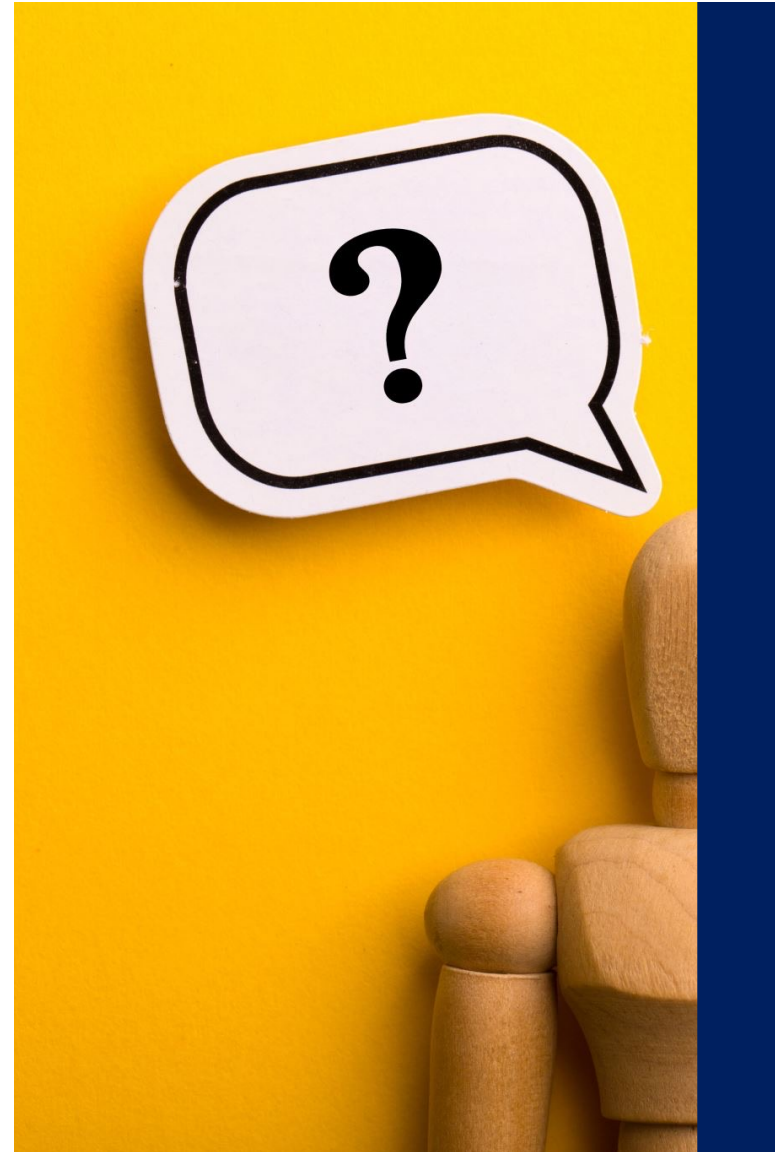


Questions about the
portal?

Please see
the office

Questions about
program planning?

Please see your
counsellor





THANK
YOU
VERY
MUCH!